

# It's so easy to make...

You can create your own design  
or follow our pattern.

You require the following: -

A piece of Calico, approx. 52cm x 65cm.

PVC adhesive – white wood glue

Kapok for stuffing or you could use  
newspaper, cotton wool or tissue paper.

Paints and a brush

String for the guy ropes

Pencil and ruler

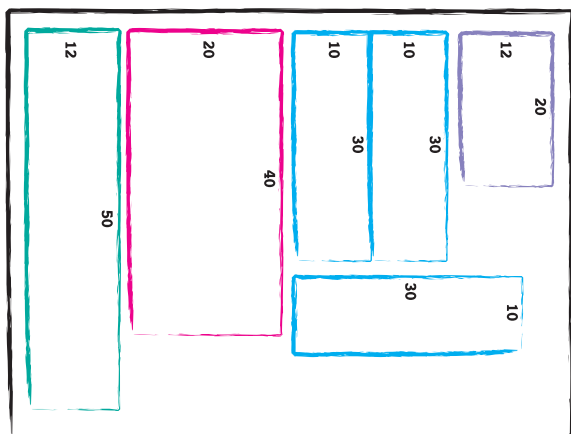
Needle and cotton

Scissors



## Make Your Own Sylvanian BOUNCY CASTLE

Parental  
Supervision  
Required

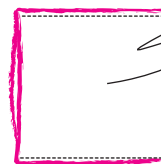
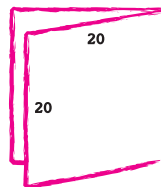


### Step 1.

With the pencil and ruler draw out on the piece of Calico all the elements of your castle. You will be painting your castle so pencil marks will not matter. The five elements you require are: -

Base 20cm x 40cm	Back 30cm x 10cm
Right side 30cm x 10cm	Front arch 50cm x 12cm
Left side 30cm x 10cm	Step 20cm x 12cm

Check all the sizes again and then cut them all out.



### Step 2. The Base.

Fold the base material in half, length ways to make a square 20cm x 20cm and sew along the sides. Turn the base inside out and draw four lines from the back to the open front equally spaced out as shown. Then sew along your pencil lines to create five tubes. Stuff each tube with kapok, newspaper or whichever stuffing you are using. Finally sew up the open ends. The base is ready.



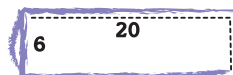
### Step 3. The Sides and Back.

Fold each of these elements in half, length ways to make three strips 15cm x 10cm and sew along the sides. Turn the sides and back elements inside out and draw a line down the middle from the back to the open front as shown. Then sew along your pencil line to create two tubes. Stuff the tubes and sew up the open ends. The sides and back are ready.



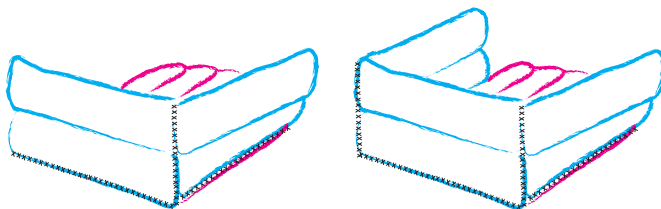
### Step 4. Front Arch.

Fold the material for the front arch in half, width ways to make a strip 50cm x 6cm and sew along two sides as shown. Turn the arch inside out and stuff the tube loosely as you will need to bend the tube. Then fold in edges of open end and cross stitch closed. The front arch is ready. Stuff front arch loosely so it will bend.



### Step 5. The Step.

Fold the material for the step in half, width ways to make a strip 20cm x 6cm and sew along two sides as shown. Turn the step inside out and stuff the tube. Do not sew up the open end yet. The front step is ready.



### Step 6. Assembly.

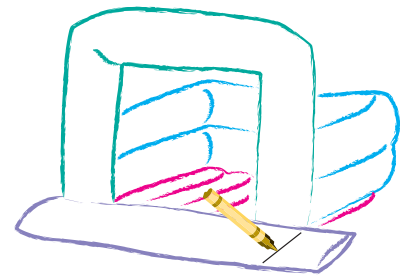
Stitch the back to the base, then add the sides.



### Step 7. The Front Arch.

Measure the width of your bouncy castle, depending on your sewing, each castle will be different. Let's say it's 15cm wide and your front arch is 47cm long, the calculation is as follows  $47 - 15$  divided by  $2 = 16$ . So you measure 16cm from on end of your front arch and 16 from the other end leaving you a 15cm gap in the middle. See diagram.

Fold the front arch at each pencil mark at right angles and cross stitch sided to hold shape. Now sew arch onto your castle.



### Step 8. Adding the Front Step.

Position your front step in front of the castle and mark off the width in pencil. Fold the excess material into the front step tube and cross stitch closed. Sew the step to the front of your castle.



### Step 9. Guy Ropes.

Attach a piece of string to each corner of your bouncy castle for that real look.



### Step 10. Optional.

Using a leftover piece of calico, cover the corners, where the back and sides meet. This is not needed, it just tidies up the overall look.

### Step 11. Painting.

Protect all work surfaces before you start with plenty of newspaper or plastic sheeting.

Before you can paint your Bouncy Castle, you will need to give it a coat or two of PVC adhesive this will seal the calico and make painting easier.

**Don't let your Sylvanians near the castle until the adhesive and/or paint is well and truly dry.**